



KINGDOM OF CAMBODIA  
NATION RELIGION KING



# TOURISM STATISTICS REPORT

# March 2021

**MINISTRY OF TOURISM**  
NATIONAL INSTITUTE OF TOURISM  
TOURISM STATISTICS DEPARTMENT  
No. A3, Street 169, Sangkat Veal Vong, Khan 7 Makara, Phnom Penh, Cambodia.  
Telegram Chanel: Tourism\_Statistics  
E-mail: [kong@tourism.gov.kh](mailto:kong@tourism.gov.kh)  
Website: [www.tourism.gov.kh](http://www.tourism.gov.kh)

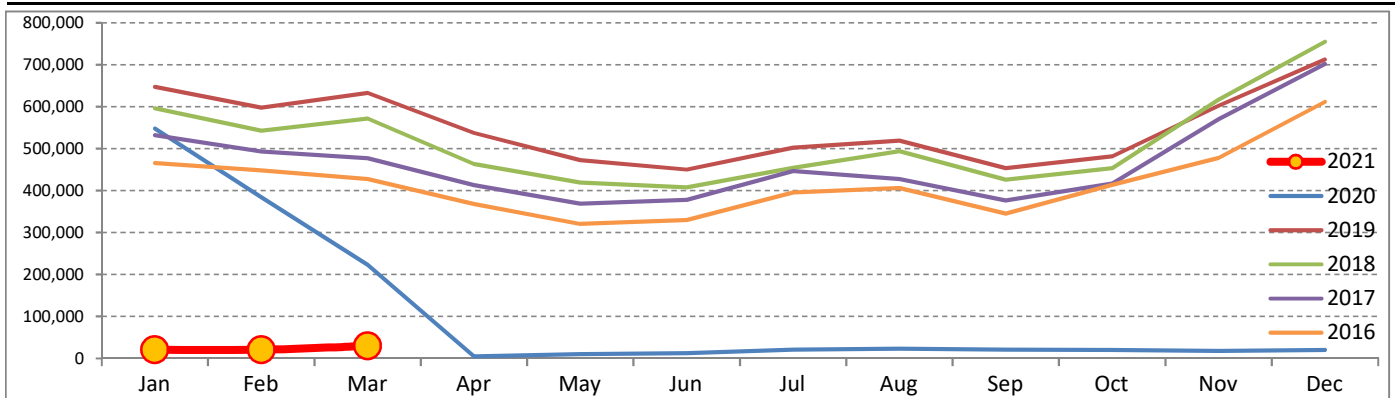
## Tourism Highlights

Int'l Tourist Arrivals, Average Length of Stays, Hotel Occupancy & Int'l Tourism Receipts in 1993 - 2020

Years	Int'l Tourist Arrivals		Average Length	Hotel Occupancy	Int'l Tourism Receipts
	Number	Change (%)	of Stays (Days)	(%)	(Million USD)
1993	118,183	-	N/A	N/A	N/A
1994	176,617	49.4	N/A	N/A	N/A
1995	219,680	24.4	8.0	37.0	100
1996	260,489	18.6	7.5	40.0	118
1997	218,843	-16.0	6.4	30.0	103
1998	286,524	30.9	5.2	40.0	166
1999	367,743	28.3	5.5	44.0	190
2000	466,365	26.8	5.5	45.0	228
2001	604,919	29.7	5.5	48.0	304
2002	786,524	30.0	5.8	50.0	379
2003	701,014	-10.9	5.5	50.0	347
2004	1,055,202	50.5	6.3	52.0	578
2005	1,421,615	34.7	6.3	52.0	832
2006	1,700,041	19.6	6.5	54.8	1,049
2007	2,015,128	18.5	6.5	54.8	1,400
2008	2,125,465	5.5	6.7	62.7	1,595
2009	2,161,577	1.7	6.5	63.6	1,561
2010	2,508,289	16.0	6.5	65.7	1,786
2011	2,881,862	14.9	6.5	66.2	1,912
2012	3,584,307	24.4	6.3	68.5	2,210
2013	4,210,165	17.5	6.8	69.5	2,547
2014	4,502,775	7.0	6.5	67.6	2,736
2015	4,775,231	6.1	6.8	70.2	3,012
2016	5,011,712	5.0	6.3	68.9	3,212
2017	5,602,157	11.8	6.6	71.3	3,638
2018	6,201,077	10.7	7.0	72.2	4,375
2019	6,610,592	6.6	6.2	63.5	4,919
2020	1,306,143	-80.2	Jan - Mar: 6.2 Apr - Dec: 30.0	Jan - Mar: 78.9 Apr - Dec: 8.3	1,023

### International Tourist Arrivals to Cambodia

Months	2016	2017	2018	2019	2020	2021	Change (%)				
							17/16	18/17	19/18	20/19	2021*/20
<b>Q1</b>	<b>1,342,477</b>	<b>1,502,896</b>	<b>1,711,253</b>	<b>1,877,853</b>	<b>1,155,226</b>	<b>70,901</b>	<b>11.9</b>	<b>13.9</b>	<b>9.7</b>	<b>-38.5</b>	<b>-93.9</b>
Jan	466,086	532,206	596,241	647,206	547,963	20,567	14.2	12.0	8.5	-15.3	-96.2
Feb	448,468	493,316	542,937	597,483	383,863	20,580	10.0	10.1	10.0	-35.8	-94.6
Mar	427,923	477,374	572,075	633,164	223,400	29,754	11.6	19.8	10.7	-64.7	-86.7
<b>Q2</b>	<b>1,018,455</b>	<b>1,159,783</b>	<b>1,290,407</b>	<b>1,460,621</b>	<b>27,600</b>	<b>0</b>	<b>13.9</b>	<b>11.3</b>	<b>13.2</b>	<b>-98.1</b>	
Apr	367,684	412,925	463,423	537,656	4,841		12.3	12.2	16.0	-99.1	
May	320,601	368,809	419,171	472,952	10,475		15.0	13.7	12.8	-97.8	
Jun	330,170	378,049	407,813	450,013	12,284		14.5	7.9	10.3	-97.3	
<b>Q3</b>	<b>1,147,483</b>	<b>1,250,082</b>	<b>1,374,373</b>	<b>1,475,832</b>	<b>64,854</b>	<b>0</b>	<b>8.9</b>	<b>9.9</b>	<b>7.4</b>	<b>-95.6</b>	
Jul	395,761	446,627	454,056	502,421	20,689		12.9	1.7	10.7	-95.9	
Aug	406,214	427,224	494,043	519,502	23,028		5.2	15.6	5.2	-95.6	
Sep	345,508	376,231	426,274	453,909	21,137		8.9	13.3	6.5	-95.3	
<b>Q4</b>	<b>1,503,297</b>	<b>1,689,396</b>	<b>1,825,044</b>	<b>1,796,286</b>	<b>58,463</b>	<b>0</b>	<b>12.4</b>	<b>8.0</b>	<b>-1.6</b>	<b>-96.7</b>	
Oct	414,077	417,039	453,370	481,782	20,210		0.7	8.7	6.3	-95.8	
Nov	477,686	570,471	616,549	602,042	18,184		19.4	8.1	-2.4	-97.0	
Dec	611,534	701,886	755,125	712,462	20,069		14.8	7.6	-5.6	-97.2	
<b>Total</b>	<b>5,011,712</b>	<b>5,602,157</b>	<b>6,201,077</b>	<b>6,610,592</b>	<b>1,306,143</b>	<b>70,901</b>	<b>11.8</b>	<b>10.7</b>	<b>6.6</b>	<b>-80.2</b>	<b>-93.9</b>



Source: Tourism Statistics Department, MOT.

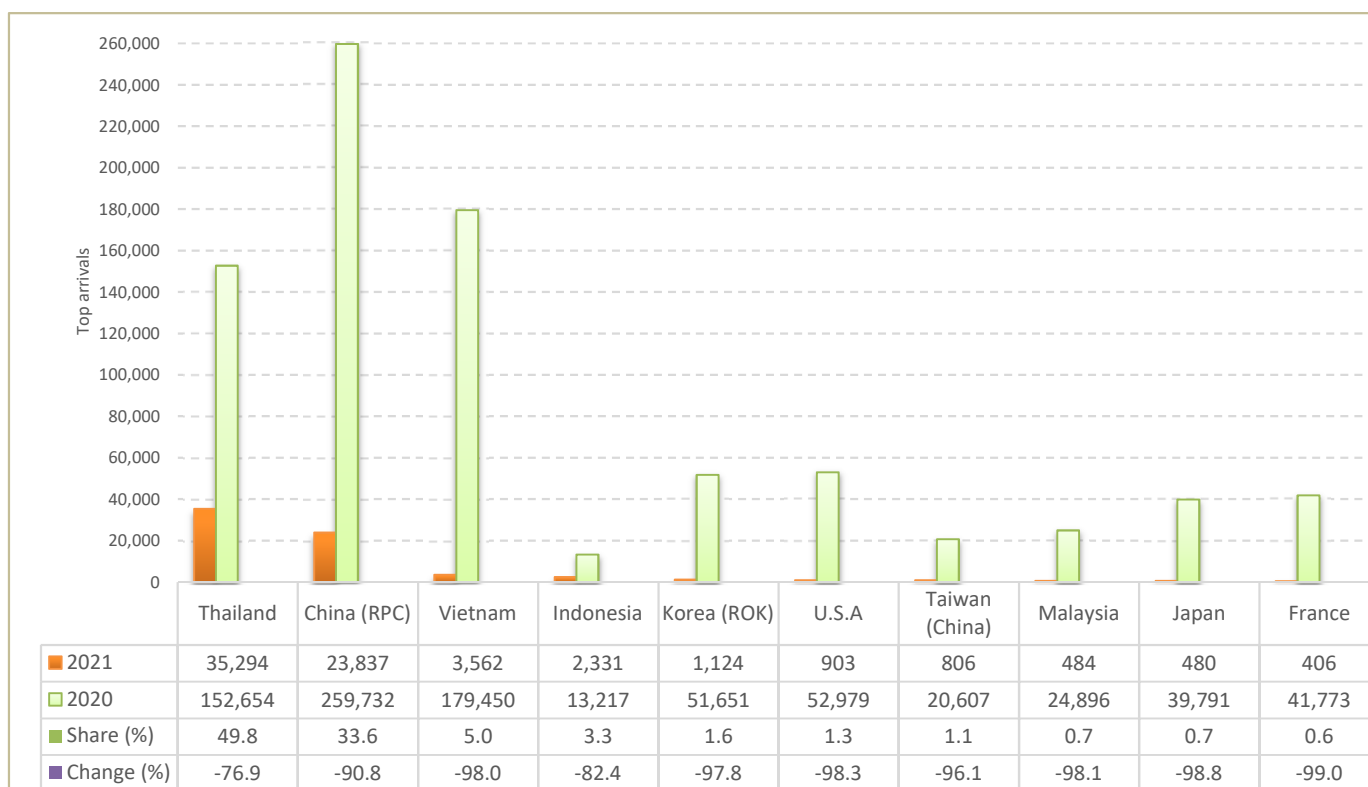
# CAMBODIA: TOURISM STATISTICS REPORT IN THE FIRST QUARTER 2021

## I. INBOUND TOURISM

### 1. International tourist arrivals in January - March 2021

	Inbound tourism			Share (%) 2021*	Change (%)	
	2019	2020	2021		20/19	2021*/20
<b>Air</b>	<b>1,299,122</b>	<b>663,641</b>	<b>33,535</b>	<b>47.3</b>	<b>-48.9</b>	<b>-94.9</b>
Phnom Penh Int'l Airport (PNH)	581,709	365,315	27,055	38.2	-37.2	-92.6
Siem Reap Int'l Airport (REP)	583,879	240,785	2	0.0	-58.8	-100.0
Kong Keng (KOS)	133,534	57,541	6,478	9.1	-56.9	-88.7
<b>Land and Waterways</b>	<b>578,731</b>	<b>491,585</b>	<b>37,366</b>	<b>52.7</b>	<b>-15.1</b>	<b>-92.4</b>
Land	512,309	440,096	37,366	52.7	-14.1	-91.5
Waterways	66,422	51,489	0	0.0	-22.5	-100.0
<b>Total</b>	<b>1,877,853</b>	<b>1,155,226</b>	<b>70,901</b>	<b>100.0</b>	<b>-38.5</b>	<b>-93.9</b>

### 2. Top ten markets arrivals in January - March 2021



## II. OUTBOUND TOURISM

### Outbound tourism in January - March 2021

	Outbound tourism			Change (%)	
	2019	2020	2021	20/19	2021*/20
Cambodia Outbound Tourists	456,876	308,350	5,509	-32.5	-98.2
International Tourists Departure	1,697,629	1,193,072	63,666	-29.7	-94.7

## III. INTERNAL TOURISM

### Domestic and foreign visitors' arrivals to the regions in January - March 2021

	January - March 2020		January - March 2021		Change 2021*/20 (%)	
	KHM	FOR	KHM	FOR	KHM	FOR
Phnom Penh	592,379	771,563	374,196	66,419	-36.8	-91.4
Siem Reap Angkor	164,600	383,663	115,255	4,482	-30.0	-98.8
Coastal Zone	1,010,579	270,030	903,291	42,059	-10.6	-84.4
Preah Sihanouk	244,269	161,750	532,380	35,438	117.9	-78.1
Eco-tourism Zone	162,023	20,547	139,345	2,143	-14.0	-89.6
<b>Total</b>	<b>1,929,581</b>	<b>1,445,803</b>	<b>1,532,087</b>	<b>115,103</b>	<b>-20.6</b>	<b>-92.0</b>

#### Note:

KHM: Cambodia visitors

FOR: Foreign visitors

Source: Tourism Statistics Department, MOT.

## International Tourist Arrivals to Cambodia by Country of Residence in January - March 2021

(by all means of transportation)

Regions Country of Residence	2020	2021					Share 2021* (%)	Change 2021*/20 (%)
		Purposes of Visit			Total			
		Holiday	Business	Others	Male	Female		
<b>Grand Total</b>	<b>1,155,226</b>	<b>33,821</b>	<b>34,636</b>	<b>2,444</b>	<b>70,901</b>	<b>8,170</b>	<b>100.0</b>	<b>-93.9</b>
<b>Asia and the Pacific</b>	<b>849,955</b>	<b>33,738</b>	<b>33,378</b>	<b>1,637</b>	<b>68,753</b>	<b>7,349</b>	<b>97.0</b>	<b>-91.9</b>
<b>ASEAN (Southeast Asia)</b>	<b>432,322</b>	<b>33,554</b>	<b>7,222</b>	<b>1,300</b>	<b>42,076</b>	<b>2,528</b>	<b>59.3</b>	<b>-90.3</b>
Brunei Darussalam	144	0	0	0	0	0	0.0	-100.0
Indonesia	13,217	16	2,312	3	2,331	440	3.3	-82.4
Lao PDR	34,287	0	33	0	33	6	0.0	-99.9
Malaysia	24,896	22	449	13	484	94	0.7	-98.1
Myanmar	2,944	8	41	1	50	25	0.1	-98.3
Philippines	14,305	24	161	12	197	86	0.3	-98.6
Singapore	10,405	6	115	4	125	27	0.2	-98.8
Thailand	152,654	33,458	590	1,246	35,294	747	49.8	-76.9
Timor Leste	20	0	0	0	0	0	0.0	-100.0
Vietnam	179,450	20	3,521	21	3,562	1,103	5.0	-98.0
<b>Northeast Asia</b>	<b>372,364</b>	<b>158</b>	<b>25,853</b>	<b>248</b>	<b>26,259</b>	<b>4,708</b>	<b>37.0</b>	<b>-92.9</b>
China	259,732	85	23,642	110	23,837	4,141	33.6	-90.8
Hong Kong (China)	271	0	2	0	2	0	0.0	-99.3
Japan	39,791	3	458	19	480	110	0.7	-98.8
Korea (ROK)	51,651	30	988	106	1,124	289	1.6	-97.8
Macau (China)	30	0	0	0	0	0	0.0	-100.0
Mongolia	282	3	5	2	10	0	0.0	-96.5
Taiwan (China)	20,607	37	758	11	806	168	1.1	-96.1
<b>Southern Asia</b>	<b>17,146</b>	<b>23</b>	<b>209</b>	<b>9</b>	<b>241</b>	<b>49</b>	<b>0.3</b>	<b>-98.6</b>
Afghanistan	47	0	1	0	1	0	0.0	-97.9
Bangladesh	1,609	0	31	4	35	6	0.0	-97.8
Bhutan	42	0	1	0	1	0	0.0	-97.6
India	12,675	4	94	1	99	28	0.1	-99.2
Iran	276	4	1	0	5	1	0.0	-98.2
Nepal	673	0	6	2	8	1	0.0	-98.8
Pakistan	1,099	0	21	0	21	3	0.0	-98.1
Sri Lanka	725	15	54	2	71	10	0.1	-90.2
<b>Oceania</b>	<b>27,641</b>	<b>3</b>	<b>92</b>	<b>79</b>	<b>174</b>	<b>64</b>	<b>0.2</b>	<b>-99.4</b>
Australia	23,230	2	76	47	125	48	0.2	-99.5
Fiji	73	0	0	0	0	0	0.0	-100.0
New Zealand	4,338	1	16	32	49	16	0.1	-98.9
Other Asia & the Pacific	482	0	2	1	3	0	0.0	-99.4
<b>Europe</b>	<b>221,066</b>	<b>50</b>	<b>750</b>	<b>213</b>	<b>1,013</b>	<b>391</b>	<b>1.4</b>	<b>-99.5</b>
<b>Northern Europe</b>	<b>60,839</b>	<b>6</b>	<b>182</b>	<b>14</b>	<b>202</b>	<b>67</b>	<b>0.3</b>	<b>-99.7</b>
Denmark	4,309	1	20	2	23	9	0.0	-99.5
Finland	2,074	0	5	2	7	4	0.0	-99.7
Iceland	224	0	0	0	0	0	0.0	-100.0
Ireland	2,579	0	9	0	9	1	0.0	-99.7
Norway	2,772	0	3	1	4	0	0.0	-99.9
Sweden	4,650	0	16	2	18	3	0.0	-99.6
United Kingdom	44,231	5	129	7	141	50	0.2	-99.7
<b>Western Europe</b>	<b>88,454</b>	<b>29</b>	<b>406</b>	<b>189</b>	<b>624</b>	<b>254</b>	<b>0.9</b>	<b>-99.3</b>
Austria	3,501	0	6	1	7	1	0.0	-99.8
Belgium	4,170	1	17	4	22	9	0.0	-99.5
France	41,773	23	234	149	406	170	0.6	-99.0
Germany	26,905	5	103	16	124	43	0.2	-99.5
Luxembourg	184	0	0	0	0	0	0.0	-100.0
Monaco	27	0	0	0	0	0	0.0	-100.0
Netherlands	6,398	0	22	4	26	12	0.0	-99.6
Switzerland	5,496	0	24	15	39	19	0.1	-99.3
<b>Central / Eastern Europe</b>	<b>43,779</b>	<b>9</b>	<b>84</b>	<b>4</b>	<b>97</b>	<b>41</b>	<b>0.1</b>	<b>-99.8</b>
Bulgaria	926	0	4	0	4	3	0.0	-99.6
Czech Republic	2,319	0	7	1	8	6	0.0	-99.7
Estonia	529	0	0	0	0	0	0.0	-100.0
Hungary	2,773	0	3	0	3	1	0.0	-99.9
Kazakhstan	619	1	8	0	9	5	0.0	-98.5
Kyrgyzstan	140	0	0	0	0	0	0.0	-100.0
Latvia	368	0	1	0	1	1	0.0	-99.7
Lithuania	939	0	0	0	0	0	0.0	-100.0
Poland	7,560	0	10	1	11	2	0.0	-99.9
Romania	1,317	1	8	0	9	6	0.0	-99.3
Russian Federation	21,764	2	22	2	26	9	0.0	-99.9
Slovakia	1,140	2	13	0	15	3	0.0	-98.7
Ukraine	3,112	3	7	0	10	5	0.0	-99.7
Uzbekistan	273	0	1	0	1	0	0.0	-99.6

## International Tourist Arrivals to Cambodia by Country of Residence in January - March 2021

(by all means of transportation)

Regions Country of Residence	2020	2021					Share 2021* (%)	Change 2021*/20 (%)
		Purposes of Visit			Total	Female		
		Holiday	Business	Others				
<b>Grand Total</b>	<b>1,155,226</b>	<b>33,821</b>	<b>34,636</b>	<b>2,444</b>	<b>70,901</b>	<b>8,170</b>	<b>100.0</b>	<b>-93.9</b>
<b>Southern Europe</b>	<b>20,664</b>	<b>4</b>	<b>61</b>	<b>6</b>	<b>71</b>	<b>22</b>	<b>0.1</b>	<b>-99.7</b>
Croatia	554	0	2	0	2	0	0.0	-99.6
Greece	558	0	2	0	2	0	0.0	-99.6
Italy	10,954	1	31	4	36	9	0.1	-99.7
Malta	125	0	0	0	0	0	0.0	-100.0
Portugal	1,735	1	5	1	7	3	0.0	-99.6
Serbia	512	0	4	0	4	1	0.0	-99.2
Slovenia	521	0	3	0	3	0	0.0	-99.4
Spain	5,705	2	14	1	17	9	0.0	-99.7
<b>East Mediterranean Europe</b>	<b>7,093</b>	<b>2</b>	<b>16</b>	<b>0</b>	<b>18</b>	<b>7</b>	<b>0.0</b>	<b>-99.7</b>
Israel	4,795	0	4	0	4	0	0.0	-99.9
Turkey	2,298	2	12	0	14	7	0.0	-99.4
Other Europe	237	0	1	0	1	0	0.0	-99.6
<b>Americas</b>	<b>79,886</b>	<b>16</b>	<b>440</b>	<b>583</b>	<b>1,039</b>	<b>404</b>	<b>1.5</b>	<b>-98.7</b>
<b>North America</b>	<b>69,656</b>	<b>16</b>	<b>417</b>	<b>579</b>	<b>1,012</b>	<b>397</b>	<b>1.4</b>	<b>-98.5</b>
Canada	15,140	2	59	42	103	40	0.1	-99.3
Mexico	1,537	1	5	0	6	0	0.0	-99.6
United States of America	52,979	13	353	537	903	357	1.3	-98.3
<b>Central America</b>	<b>222</b>	<b>0</b>	<b>0</b>	<b>0</b>	<b>0</b>	<b>0</b>	<b>0.0</b>	<b>-100.0</b>
Costa Rica	145	0	0	0	0	0	0.0	-100.0
Honduras	41	0	0	0	0	0	0.0	-100.0
Jamaica	36	0	0	0	0	0	0.0	-100.0
<b>South America</b>	<b>9,876</b>	<b>0</b>	<b>22</b>	<b>4</b>	<b>26</b>	<b>7</b>	<b>0.0</b>	<b>-99.7</b>
Argentina	2,620	0	2	0	2	0	0.0	-99.9
Brazil	3,925	0	12	3	15	4	0.0	-99.6
Chile	1,564	0	1	0	1	0	0.0	-99.9
Colombia	910	0	3	0	3	2	0.0	-99.7
Ecuador	124	0	2	0	2	1	0.0	-98.4
Peru	344	0	0	0	0	0	0.0	-100.0
Uruguay	270	0	1	1	2	0	0.0	-99.3
Venezuela	119	0	1	0	1	0	0.0	-99.2
Other America	132	0	1	0	1	0	0.0	-99.2
<b>Africa</b>	<b>3,113</b>	<b>4</b>	<b>56</b>	<b>8</b>	<b>68</b>	<b>22</b>	<b>0.1</b>	<b>-97.8</b>
<b>North Africa</b>	<b>473</b>	<b>2</b>	<b>3</b>	<b>0</b>	<b>5</b>	<b>4</b>	<b>0.0</b>	<b>-98.9</b>
Morocco	308	2	1	0	3	3	0.0	-99.0
Sudan	39	0	0	0	0	0	0.0	-100.0
Tunisia	126	0	2	0	2	1	0.0	-98.4
<b>Subsaharan Africa</b>	<b>2,603</b>	<b>2</b>	<b>53</b>	<b>8</b>	<b>63</b>	<b>18</b>	<b>0.1</b>	<b>-97.6</b>
Cameroon	81	0	3	0	3	0	0.0	-96.3
Congo	20	0	0	0	0	0	0.0	-100.0
Ghana	252	0	0	0	0	0	0.0	-100.0
Kenya	123	1	4	6	11	4	0.0	-91.1
Liberia	92	0	0	0	0	0	0.0	-100.0
Nigeria	180	0	20	0	20	1	0.0	-88.9
South Africa	1,694	1	23	0	24	12	0.0	-98.6
Tanzania	33	0	0	1	1	0	0.0	-97.0
Uganda	71	0	1	1	2	0	0.0	-97.2
Zimbabwe	57	0	2	0	2	1	0.0	-96.5
Other Africa	37	0	0	0	0	0	0.0	-100.0
<b>Middle East</b>	<b>1,206</b>	<b>13</b>	<b>12</b>	<b>3</b>	<b>28</b>	<b>4</b>	<b>0.0</b>	<b>-97.7</b>
Egypt	278	0	2	1	3	3	0.0	-98.9
Iraq	107	0	0	1	1	0	0.0	-99.1
Jordan	151	0	7	0	7	0	0.0	-95.4
Kuwait	78	1	2	0	3	1	0.0	-96.2
Oman	50	1	0	0	1	0	0.0	-98.0
Palestine	38	0	0	0	0	0	0.0	-100.0
Qatar	17	1	0	0	1	0	0.0	-94.1
Saudi Arabia	89	0	0	0	0	0	0.0	-100.0
Syria	84	1	0	0	1	0	0.0	-98.8
United Arab Emirates	40	9	1	1	11	0	0.0	-72.5
Yemen	250	0	0	0	0	0	0.0	-100.0
Other Middle East	24	0	0	0	0	0	0.0	-100.0

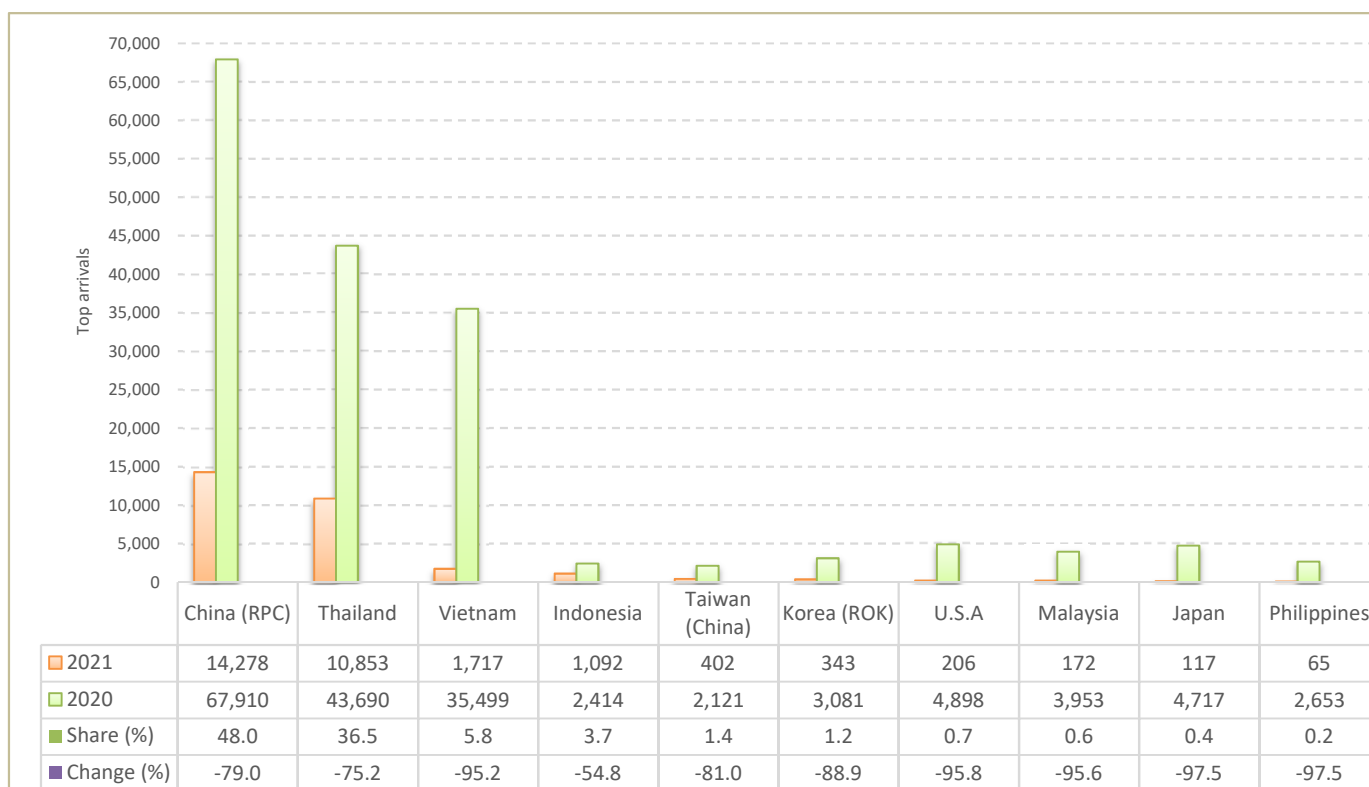
## CAMBODIA: TOURISM STATISTICS REPORT IN MARCH 2021

### I. INBOUND TOURISM

#### 1. International tourist arrivals in March 2021

	Inbound tourism			Share (%) 2021*	Change (%)	
	2019	2020	2021		20/19	2021*/20
<b>Air</b>	<b>456,443</b>	<b>121,056</b>	<b>17,792</b>	<b>59.8</b>	<b>-73.5</b>	<b>-85.3</b>
Phnom Penh Int'l Airport (PNH)	214,575	75,762	14,302	48.1	-64.7	-81.1
Siem Reap Int'l Airport (REP)	183,437	23,047	2	0.0	-87.4	-100.0
Kong Keng (KOS)	58,431	22,247	3,488	11.7	-61.9	-84.3
<b>Land and Waterways</b>	<b>176,721</b>	<b>102,344</b>	<b>11,962</b>	<b>40.2</b>	<b>-42.1</b>	<b>-88.3</b>
Land	156,319	96,403	11,962	40.2	-38.3	-87.6
Waterways	20,402	5,941	0	0.0	-70.9	-100.0
<b>Total</b>	<b>633,164</b>	<b>223,400</b>	<b>29,754</b>	<b>100.0</b>	<b>-64.7</b>	<b>-86.7</b>

#### 2. Top ten markets arrivals in March 2021



### II. OUTBOUND TOURISM

#### Outbound tourism in March 2021

	Outbound tourism			Change (%)	
	2019	2020	2021	20/19	2021*/20
Cambodia Outbound Tourists	156,127	49,813	1,826	-68.1	-96.3
International Tourists Departure	559,747	231,867	18,164	-58.6	-92.2

### III. INTERNAL TOURISM

#### Domestic and foreign visitors' arrivals to the regions in March 2021

	March 2020		March 2021		Change 2021*/20 (%)	
	KHM	FOR	KHM	FOR	KHM	FOR
Phnom Penh	182,923	181,231	21,044	29,466	-88.5	-83.7
Siem Reap Angkor	2,800	42,169	750	288	-73.2	-99.3
Coastal Zone	108,399	51,201	86,370	6,514	-20.3	-87.3
Preah Sihanouk	31,131	32,380	49,529	4,940	59.1	-84.7
Eco-tourism Zone	31,528	3,646	17,410	155	-44.8	-95.7
<b>Total</b>	<b>325,650</b>	<b>278,247</b>	<b>125,574</b>	<b>36,423</b>	<b>-61.4</b>	<b>-86.9</b>

#### Note:

KHM: Cambodia visitors

FOR: Foreign visitors

Source: Tourism Statistics Department, MOT.

## International Tourist Arrivals to Cambodia by Country of Residence in March 2021

(by all means of transportation)

Regions Country of Residence	2020	2021					Share 2021* (%)	Change 2021*/20 (%)
		Purposes of Visit			Total			
		Holiday	Business	Others	Male	Female		
<b>Grand Total</b>	<b>223,400</b>	<b>10,359</b>	<b>18,702</b>	<b>693</b>	<b>29,754</b>	<b>3,691</b>	<b>100.0</b>	<b>-86.7</b>
<b>Asia and the Pacific</b>	<b>181,162</b>	<b>10,337</b>	<b>18,414</b>	<b>495</b>	<b>29,246</b>	<b>3,499</b>	<b>98.3</b>	<b>-83.9</b>
<b>ASEAN (Southeast Asia)</b>	<b>97,384</b>	<b>10,288</b>	<b>3,277</b>	<b>398</b>	<b>13,963</b>	<b>1,140</b>	<b>46.9</b>	<b>-85.7</b>
Brunei Darussalam	10	0	0	0	0	0	0.0	-100.0
Indonesia	2,414	4	1,086	2	1,092	205	3.7	-54.8
Lao PDR	6,679	0	11	0	11	0	0.0	-99.8
Malaysia	3,953	3	166	3	172	39	0.6	-95.6
Myanmar	753	4	9	0	13	8	0.0	-98.3
Philippines	2,653	10	55	0	65	31	0.2	-97.5
Singapore	1,729	2	35	3	40	12	0.1	-97.7
Thailand	43,690	10,262	210	381	10,853	254	36.5	-75.2
Timor Leste	4	0	0	0	0	0	0.0	-100.0
Vietnam	35,499	3	1,705	9	1,717	591	5.8	-95.2
<b>Northeast Asia</b>	<b>77,859</b>	<b>44</b>	<b>15,012</b>	<b>86</b>	<b>15,142</b>	<b>2,318</b>	<b>50.9</b>	<b>-80.6</b>
China	67,910	18	14,215	45	14,278	2,148	48.0	-79.0
Hong Kong (China)	9	0	0	0	0	0	0.0	-100.0
Japan	4,717	2	110	5	117	21	0.4	-97.5
Korea (ROK)	3,081	11	298	34	343	88	1.2	-88.9
Macau (China)	4	0	0	0	0	0	0.0	-100.0
Mongolia	17	0	2	0	2	0	0.0	-88.2
Taiwan (China)	2,121	13	387	2	402	61	1.4	-81.0
<b>Southern Asia</b>	<b>2,124</b>	<b>5</b>	<b>92</b>	<b>3</b>	<b>100</b>	<b>29</b>	<b>0.3</b>	<b>-95.3</b>
Afghanistan	6	0	0	0	0	0	0.0	-100.0
Bangladesh	323	0	8	3	11	2	0.0	-96.6
Bhutan	5	0	0	0	0	0	0.0	-100.0
India	1,425	1	44	0	45	18	0.2	-96.8
Iran	26	2	0	0	2	1	0.0	-92.3
Nepal	92	0	5	0	5	0	0.0	-94.6
Pakistan	155	0	12	0	12	3	0.0	-92.3
Srilanka	92	2	23	0	25	5	0.1	-72.8
<b>Oceania</b>	<b>3,526</b>	<b>0</b>	<b>33</b>	<b>8</b>	<b>41</b>	<b>12</b>	<b>0.1</b>	<b>-98.8</b>
Australia	3,060	0	31	4	35	9	0.1	-98.9
Fiji	8	0	0	0	0	0	0.0	-100.0
New Zealand	458	0	2	4	6	3	0.0	-98.7
Other Asia & the Pacific	269	0	0	0	0	0	0.0	-100.0
<b>Europe</b>	<b>32,939</b>	<b>17</b>	<b>195</b>	<b>34</b>	<b>246</b>	<b>98</b>	<b>0.8</b>	<b>-99.3</b>
<b>Northern Europe</b>	<b>9,854</b>	<b>3</b>	<b>47</b>	<b>2</b>	<b>52</b>	<b>20</b>	<b>0.2</b>	<b>-99.5</b>
Denmark	677	0	10	0	10	5	0.0	-98.5
Finland	313	0	1	0	1	0	0.0	-99.7
Iceland	32	0	0	0	0	0	0.0	-100.0
Ireland	459	0	1	0	1	0	0.0	-99.8
Norway	397	0	2	0	2	0	0.0	-99.5
Sweden	619	0	5	1	6	1	0.0	-99.0
United Kingdom	7,357	3	28	1	32	14	0.1	-99.6
<b>Western Europe</b>	<b>13,694</b>	<b>10</b>	<b>93</b>	<b>32</b>	<b>135</b>	<b>54</b>	<b>0.5</b>	<b>-99.0</b>
Austria	483	0	0	0	0	0	0.0	-100.0
Belgium	742	1	9	0	10	5	0.0	-98.7
France	5,695	6	36	23	65	27	0.2	-98.9
Germany	4,795	3	33	4	40	13	0.1	-99.2
Luxembourg	34	0	0	0	0	0	0.0	-100.0
Monaco	4	0	0	0	0	0	0.0	-100.0
Netherlands	1,156	0	9	2	11	5	0.0	-99.0
Switzerland	785	0	6	3	9	4	0.0	-98.9
<b>Central / Eastern Europe</b>	<b>6,652</b>	<b>2</b>	<b>22</b>	<b>0</b>	<b>24</b>	<b>11</b>	<b>0.1</b>	<b>-99.6</b>
Bulgaria	175	0	1	0	1	1	0.0	-99.4
Czech Republic	395	0	2	0	2	1	0.0	-99.5
Estonia	75	0	0	0	0	0	0.0	-100.0
Hungary	373	0	0	0	0	0	0.0	-100.0
Kazakhstan	67	0	0	0	0	0	0.0	-100.0
Kyrgyzstan	21	0	0	0	0	0	0.0	-100.0
Latvia	59	0	0	0	0	0	0.0	-100.0
Lithuania	176	0	0	0	0	0	0.0	-100.0
Poland	843	0	1	0	1	0	0.0	-99.9
Romania	134	0	2	0	2	1	0.0	-98.5
Russian Federation	3,678	0	13	0	13	6	0.0	-99.6
Slovakia	178	0	1	0	1	0	0.0	-99.4
Ukraine	455	2	1	0	3	2	0.0	-99.3
Uzbekistan	23	0	1	0	1	0	0.0	-95.7

## International Tourist Arrivals to Cambodia by Country of Residence in March 2021

(by all means of transportation)

Regions Country of Residence	2020	2021					Share 2021* (%)	Change 2021*/20 (%)
		Purposes of Visit			Total	Female		
		Holiday	Business	Others				
<b>Grand Total</b>	<b>223,400</b>	<b>10,359</b>	<b>18,702</b>	<b>693</b>	<b>29,754</b>	<b>3,691</b>	<b>100.0</b>	<b>-86.7</b>
<b>Southern Europe</b>	<b>2,111</b>	<b>1</b>	<b>26</b>	<b>0</b>	<b>27</b>	<b>9</b>	<b>0.1</b>	<b>-98.7</b>
Croatia	34	0	2	0	2	0	0.0	-94.1
Greece	61	0	1	0	1	0	0.0	-98.4
Italy	722	1	12	0	13	3	0.0	-98.2
Malta	19	0	0	0	0	0	0.0	-100.0
Portugal	244	0	3	0	3	2	0.0	-98.8
Serbia	63	0	3	0	3	1	0.0	-95.2
Slovenia	70	0	0	0	0	0	0.0	-100.0
Spain	898	0	5	0	5	3	0.0	-99.4
<b>East Mediterranean Europe</b>	<b>520</b>	<b>1</b>	<b>7</b>	<b>0</b>	<b>8</b>	<b>4</b>	<b>0.0</b>	<b>-98.5</b>
Israel	386	0	3	0	3	0	0.0	-99.2
Turkey	134	1	4	0	5	4	0.0	-96.3
Other Europe	108	0	0	0	0	0	0.0	-100.0
<b>Americas</b>	<b>8,641</b>	<b>4</b>	<b>80</b>	<b>157</b>	<b>241</b>	<b>89</b>	<b>0.8</b>	<b>-97.2</b>
<b>North America</b>	<b>7,147</b>	<b>4</b>	<b>79</b>	<b>157</b>	<b>240</b>	<b>88</b>	<b>0.8</b>	<b>-96.6</b>
Canada	1,993	1	14	16	31	11	0.1	-98.4
Mexico	256	0	3	0	3	0	0.0	-98.8
United States of America	4,898	3	62	141	206	77	0.7	-95.8
<b>Central America</b>	<b>31</b>	<b>0</b>	<b>0</b>	<b>0</b>	<b>0</b>	<b>0</b>	<b>0.0</b>	<b>-100.0</b>
Costa Rica	17	0	0	0	0	0	0.0	-100.0
Honduras	7	0	0	0	0	0	0.0	-100.0
Jamaica	7	0	0	0	0	0	0.0	-100.0
<b>South America</b>	<b>1,423</b>	<b>0</b>	<b>1</b>	<b>0</b>	<b>1</b>	<b>1</b>	<b>0.0</b>	<b>-99.9</b>
Argentina	403	0	0	0	0	0	0.0	-100.0
Brazil	550	0	1	0	1	1	0.0	-99.8
Chile	177	0	0	0	0	0	0.0	-100.0
Colombia	137	0	0	0	0	0	0.0	-100.0
Ecuador	11	0	0	0	0	0	0.0	-100.0
Peru	67	0	0	0	0	0	0.0	-100.0
Uruguay	66	0	0	0	0	0	0.0	-100.0
Venezuela	12	0	0	0	0	0	0.0	-100.0
Other America	40	0	0	0	0	0	0.0	-100.0
<b>Africa</b>	<b>481</b>	<b>1</b>	<b>11</b>	<b>7</b>	<b>19</b>	<b>5</b>	<b>0.1</b>	<b>-96.0</b>
<b>North Africa</b>	<b>83</b>	<b>1</b>	<b>1</b>	<b>0</b>	<b>2</b>	<b>2</b>	<b>0.0</b>	<b>-97.6</b>
Morocco	52	1	1	0	2	2	0.0	-96.2
Sudan	5	0	0	0	0	0	0.0	-100.0
Tunisia	26	0	0	0	0	0	0.0	-100.0
<b>Subsaharan Africa</b>	<b>386</b>	<b>0</b>	<b>10</b>	<b>7</b>	<b>17</b>	<b>3</b>	<b>0.1</b>	<b>-95.6</b>
Cameroon	13	0	0	0	0	0	0.0	-100.0
Congo	4	0	0	0	0	0	0.0	-100.0
Ghana	6	0	0	0	0	0	0.0	-100.0
Kenya	20	0	0	6	6	1	0.0	-70.0
Liberia	14	0	0	0	0	0	0.0	-100.0
Nigeria	38	0	7	0	7	0	0.0	-81.6
South Africa	258	0	3	0	3	2	0.0	-98.8
Tanzania	5	0	0	0	0	0	0.0	-100.0
Uganda	19	0	0	1	1	0	0.0	-94.7
Zimbabwe	9	0	0	0	0	0	0.0	-100.0
Other Africa	12	0	0	0	0	0	0.0	-100.0
<b>Middle East</b>	<b>177</b>	<b>0</b>	<b>2</b>	<b>0</b>	<b>2</b>	<b>0</b>	<b>0.0</b>	<b>-98.9</b>
Egypt	39	0	0	0	0	0	0.0	-100.0
Iraq	15	0	0	0	0	0	0.0	-100.0
Jordan	26	0	1	0	1	0	0.0	-96.2
Kuwait	8	0	0	0	0	0	0.0	-100.0
Oman	4	0	0	0	0	0	0.0	-100.0
Palestine	6	0	0	0	0	0	0.0	-100.0
Qatar	3	0	0	0	0	0	0.0	-100.0
Saudi Arabia	7	0	0	0	0	0	0.0	-100.0
Syria	13	0	0	0	0	0	0.0	-100.0
United Arab Emirates	8	0	1	0	1	0	0.0	-87.5
Yemen	41	0	0	0	0	0	0.0	-100.0
Other Middle East	7	0	0	0	0	0	0.0	-100.0