



KINGDOM OF CAMBODIA
NATION RELIGION KING



TOURISM STATISTICS REPORT

March 2026

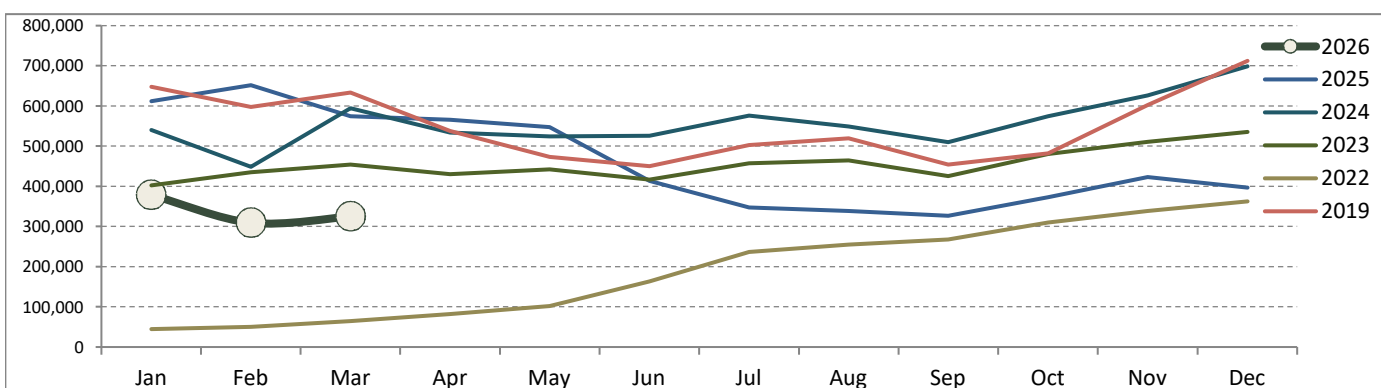
Tourism Highlights

International Tourist Arrivals, Average Length of Stays, Hotel Occupancy, International Tourism Receipts in 1993 - 2025

Years	Int'l Tourist Arrivals		Average Length	Hotel Occupancy	Int'l Tourism Receipts	Tourism Sector Share
	Number	Change (%)	of Stays (Days)	(%)	(Million USD)	to the GDP (%)
1993	118,183	-	N/A	N/A	N/A	
1994	176,617	49.4	N/A	N/A	N/A	
1995	219,680	24.4	8.0	37.0	100	
1996	260,489	18.6	7.5	40.0	118	
1997	218,843	-16.0	6.4	30.0	103	
1998	286,524	30.9	5.2	40.0	166	
1999	367,743	28.3	5.5	44.0	190	
2000	466,365	26.8	5.5	45.0	228	
2001	604,919	29.7	5.5	48.0	304	
2002	786,524	30.0	5.8	50.0	379	
2003	701,014	-10.9	5.5	50.0	347	
2004	1,055,202	50.5	6.3	52.0	578	13.9
2005	1,421,615	34.7	6.3	52.0	832	14.1
2006	1,700,041	19.6	6.5	54.8	1,049	14.0
2007	2,015,128	18.5	6.5	54.8	1,400	13.9
2008	2,125,465	5.5	6.7	62.7	1,595	12.5
2009	2,161,577	1.7	6.5	63.6	1,561	9.9
2010	2,508,289	16.0	6.5	65.7	1,786	10.8
2011	2,881,862	14.9	6.5	66.2	1,912	10.8
2012	3,584,307	24.4	6.3	68.5	2,210	11.5
2013	4,210,165	17.5	6.8	69.5	2,547	12.0
2014	4,502,775	7.0	6.5	67.6	2,736	12.2
2015	4,775,231	6.1	6.8	70.2	3,012	12.0
2016	5,011,712	5.0	6.3	68.9	3,212	11.9
2017	5,602,157	11.8	6.6	71.3	3,638	12.3
2018	6,201,077	10.7	7.0	72.2	4,375	12.7
2019	6,610,592	6.6	6.2	63.5	4,919	12.1
2020	1,306,143	-80.2	Jan - Mar: 6.2 Apr - Dec: 30.0	Jan - Mar: 78.9 Apr - Dec: 8.3	1,023	3.0
2021	196,495	-85.0	30.0	15.5	184	1.8
2022	2,276,626	1058.6	13.5	75.1	1,415	3.6
2023	5,453,231	139.5	7.6	76.5	3,083	7.5
2024	6,700,125	22.9	7.1	77.8	3,637	9.4
2025	5,569,752	-16.9	6.2	59.1	3,878	9.8

International Tourist Arrivals to Cambodia

Months	2019	2022	2023	2024	2025	2026	Change (%)				
							23/22	24/23	25/24	26*/19	2026*/25
Q1	1,877,853	159,546	1,291,539	1,582,677	1,838,208	1,014,147	709.5	22.5	16.1	-46.0	-44.8
Jan	647,206	44,910	402,943	540,023	611,894	378,818	797.2	34.0	13.3	-41.5	-38.1
Feb	597,483	50,411	434,503	448,551	652,091	309,681	761.9	3.2	45.4	-48.2	-52.5
Mar	633,164	64,225	454,093	594,103	574,223	325,648	607.0	30.8	-3.3	-48.6	-43.3
Q2	1,460,621	347,216	1,288,393	1,583,820	1,526,176	0	271.1	22.9	-3.6		
Apr	537,656	81,939	430,129	533,932	565,243		424.9	24.1	5.9		
May	472,952	101,979	442,114	524,390	547,373		333.5	18.6	4.4		
Jun	450,013	163,298	416,150	525,498	413,560		154.8	26.3	-21.3		
Q3	1,475,832	759,010	1,346,950	1,634,035	1,013,082	0	77.5	21.3	-38.0		
Jul	502,421	236,697	457,412	575,733	347,492		93.2	25.9	-39.6		
Aug	519,502	254,813	464,637	548,828	338,351		82.3	18.1	-38.4		
Sep	453,909	267,500	424,901	509,474	327,239		58.8	19.9	-35.8		
Q4	1,796,286	1,010,854	1,526,349	1,899,593	1,192,286	0	51.0	24.5	-37.2		
Oct	481,782	310,182	480,330	574,206	372,609		54.9	19.5	-35.1		
Nov	602,042	338,101	510,231	626,319	422,766		50.9	22.8	-32.5		
Dec	712,462	362,571	535,788	699,068	396,911		47.8	30.5	-43.2		
Total	6,610,592	2,276,626	5,453,231	6,700,125	5,569,752	1,014,147	139.5	22.9	-16.9	-46.0	-44.8



Source: Tourism Statistics Department, MOT.

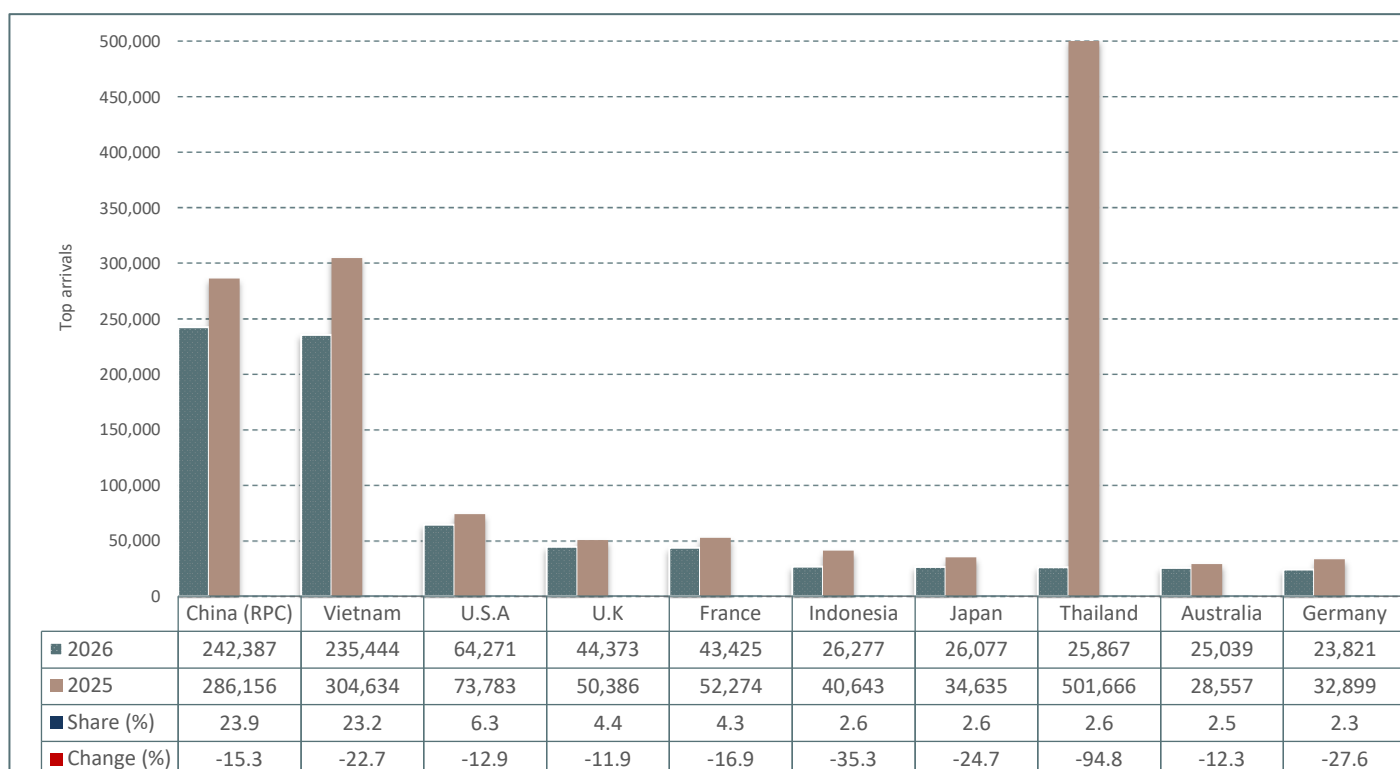
CAMBODIA: TOURISM STATISTICS REPORT IN THE FIRST QUARTER 2026

I. INBOUND TOURISM

1. International tourist arrivals in January - March 2026

	Inbound tourism				Share (%) 2026*	Change (%)		
	2019	2024	2025	2026		25/24	26*/19	2026*/25
Air	1,299,122	641,713	789,384	663,741	65.4	23.0	-48.9	-15.9
Techo Int'l Airport (KTI)	581,709	431,264	544,764	429,781	42.4	26.3	-26.1	-21.1
Siem Reap Angkor Int'l Airport (SAI)	583,879	206,788	231,701	207,599	20.5	12.0	-64.4	-10.4
Sihanouk Int'l Airport (KOS)	133,534	3,661	12,919	26,361	2.6	252.9	-80.3	104.0
Land and Waterways	578,731	940,964	1,048,824	350,406	34.6	11.5	-39.5	-66.6
Land	512,309	908,152	1,016,621	314,876	31.0	11.9	-38.5	-69.0
Waterways	66,422	32,812	32,203	35,530	3.5	-1.9	-46.5	10.3
Total	1,877,853	1,582,677	1,838,208	1,014,147	100.0	16.1	-46.0	-44.8

2. Top ten markets arrivals in January - March 2026



II. OUTBOUND TOURISM

Outbound tourism in January - March 2026

	Outbound tourism				Change (%)		
	2019	2024	2025	2026	25/24	26*/19	2026*/25
Cambodia Outbound Tourists	456,876	415,909	441,803	244,427	6.2	-46.5	-44.7
International Tourists Departure	1,697,629	1,525,114	1,777,396	1,270,494	16.5	-25.2	-28.5

III. INTERNAL TOURISM

Domestic and foreign visitors' arrivals to the regions in January - March 2026

	Jan-Mar 2025		Jan-Mar 2026		Change (%) 2026*/25	
	KH	FO	KH	FO	KH	FO
Phnom Penh	355,972	612,485	2,750,057	570,152	672.5	-6.9
Siem Reap Angkor	408,100	398,531	375,608	270,911	-8.0	-32.0
Coastal Zone	2,504,943	186,655	2,344,749	204,614	-6.4	9.6
Preah Sihanouk	1,406,938	126,359	1,201,786	148,796	-14.6	17.8
Eco-tourism Zone	125,458	16,297	137,861	15,604	9.9	-4.3
Others	395,336	50,055	412,249	51,298	4.3	2.5
Total	3,789,809	1,264,023	6,020,524	1,112,579	58.9	-12.0

Note:

KH: Cambodia visitors

FO: Foreign visitors

International Tourist Arrivals to Cambodia by Country of Residence in January - March 2026
(by all means of transportation)

Regions Country of Residence	2025		2026				Share	Change
			Purposes of Visit			Total	2026*	2026*/25
			Holiday	Business	Others	Female	(%)	(%)
Grand Total	1,838,208	717,784	266,442	29,921	1,014,147	405,799	100.0	-44.8
Asia and the Pacific	1,450,769	443,483	246,724	11,761	701,968	254,897	69.2	-51.6
ASEAN (Southeast Asia)	973,910	257,993	80,153	859	339,005	143,832	33.4	-65.2
Brunei Darussalam	104	93	10	0	103	44	0.0	-1.0
Indonesia	40,643	8,780	17,463	34	26,277	8,349	2.6	-35.3
Lao PDR	64,047	4,166	1,866	12	6,044	3,422	0.6	-90.6
Malaysia	24,461	10,093	6,909	274	17,276	4,365	1.7	-29.4
Myanmar	9,263	3,440	4,032	0	7,472	4,178	0.7	-19.3
Philippines	18,036	7,933	4,411	14	12,358	7,644	1.2	-31.5
Singapore	11,016	6,779	1,223	109	8,111	2,534	0.8	-26.4
Thailand	501,666	21,626	3,995	246	25,867	12,916	2.6	-94.8
Timor Leste	40	19	34	0	53	21	0.0	32.5
Vietnam	304,634	195,064	40,210	170	235,444	100,359	23.2	-22.7
Northeast Asia	409,959	148,488	155,879	4,257	308,624	91,248	30.4	-24.7
China	286,156	106,207	135,209	971	242,387	67,593	23.9	-15.3
Hong Kong (China)	54	23	0	0	23	14	0.0	-57.4
Japan	34,635	19,311	6,580	186	26,077	9,875	2.6	-24.7
Korea (ROK)	63,055	13,891	5,361	2,114	21,366	7,127	2.1	-66.1
Macao (China)	0	0	0	0	0	0	0.0	
Mongolia	526	359	57	0	416	175	0.0	-20.9
Taiwan (China)	25,533	8,697	8,672	986	18,355	6,464	1.8	-28.1
Southern Asia	33,585	16,568	8,399	13	24,980	6,194	2.5	-25.6
Afghanistan	77	50	4	8	62	17	0.0	-19.5
Bangladesh	4,651	871	2,643	0	3,514	188	0.3	-24.4
Bhutan	60	36	50	0	86	29	0.0	43.3
India	19,425	13,945	3,733	5	17,683	5,286	1.7	-9.0
Iran	519	266	25	0	291	72	0.0	-43.9
Maldives	45	60	11	0	71	28	0.0	57.8
Nepal	2,168	401	1,111	0	1,512	273	0.1	-30.3
Pakistan	5,504	477	498	0	975	122	0.1	-82.3
Sri Lanka	1,136	462	324	0	786	179	0.1	-30.8
Oceania	33,086	20,343	2,172	6,632	29,147	13,593	2.9	-11.9
Australia	28,557	17,864	1,918	5,257	25,039	11,644	2.5	-12.3
Fiji	120	51	16	0	67	33	0.0	-44.2
New Zealand	4,409	2,428	238	1,375	4,041	1,916	0.4	-8.3
Other Asia & the Pacific	229	91	121	0	212	30	0.0	-7.4
Europe	279,107	198,512	13,187	5,869	217,568	105,008	21.5	-22.0
Northern Europe	68,279	53,561	2,931	327	56,819	26,485	5.6	-16.8
Denmark	4,786	3,068	112	18	3,198	1,645	0.3	-33.2
Finland	1,717	1,032	57	17	1,106	471	0.1	-35.6
Iceland	289	230	5	0	235	116	0.0	-18.7
Ireland	3,582	2,891	172	5	3,068	1,428	0.3	-14.3
Norway	3,269	2,275	116	39	2,430	1,227	0.2	-25.7
Sweden	4,250	2,203	142	64	2,409	1,018	0.2	-43.3
United Kingdom	50,386	41,862	2,327	184	44,373	20,580	4.4	-11.9
Western Europe	109,715	75,318	5,449	5,475	86,242	40,909	8.5	-21.4
Austria	3,823	2,690	96	69	2,855	1,349	0.3	-25.3
Belgium	5,360	3,842	277	113	4,232	1,983	0.4	-21.0
France	52,274	35,489	3,173	4,763	43,425	20,920	4.3	-16.9
Germany	32,899	22,528	1,085	208	23,821	11,228	2.3	-27.6
Luxembourg	296	186	7	8	201	88	0.0	-32.1
Monaco	23	15	0	0	15	8	0.0	-34.8
Netherlands	8,894	6,240	442	93	6,775	3,020	0.7	-23.8
Switzerland	6,146	4,328	369	221	4,918	2,313	0.5	-20.0
Central / Eastern Europe	62,060	38,329	2,091	27	40,447	20,607	4.0	-34.8
Azerbaijan	123	100	23	0	123	39	0.0	0.0
Bulgaria	1,535	1,894	29	0	1,923	1,116	0.2	25.3
Czech Republic	3,078	2,262	96	3	2,361	1,090	0.2	-23.3
Estonia	745	517	12	0	529	253	0.1	-29.0
Hungary	2,789	2,129	53	4	2,186	1,107	0.2	-21.6
Kazakhstan	2,481	1,245	142	4	1,391	722	0.1	-43.9
Kyrgyzstan	357	418	46	0	464	242	0.0	30.0
Latvia	465	324	17	0	341	157	0.0	-26.7
Lithuania	1,054	782	17	0	799	422	0.1	-24.2
Poland	11,801	11,073	469	2	11,544	5,834	1.1	-2.2
Romania	1,783	1,610	35	1	1,646	910	0.2	-7.7
Russian Federation	31,753	12,794	767	7	13,568	6,965	1.3	-57.3
Slovakia	1,245	1,084	34	2	1,120	553	0.1	-10.0
Tajikistan	93	86	20	0	106	43	0.0	14.0
Turkmenistan	179	233	66	0	299	131	0.0	67.0
Ukraine	1,810	1,421	199	4	1,624	889	0.2	-10.3
Uzbekistan	769	357	66	0	423	134	0.0	-45.0

Source: Tourism Statistics Department, MOT.

International Tourist Arrivals to Cambodia by Country of Residence in January - March 2026
(by all means of transportation)

Regions Country of Residence	2025		2026				Share 2026*	Change 2026*/25
	Purposes of Visit			Total		Female		
	Holiday	Business	Others				(%)	(%)
Grand Total	1,838,208	717,784	266,442	29,921	1,014,147	405,799	100.0	-44.8
Southern Europe	26,074	20,475	698	26	21,199	10,456	2.1	-18.7
Croatia	700	557	17	0	574	298	0.1	-18.0
Cyprus	91	123	3	0	126	64	0.0	38.5
Greece	1,007	694	17	1	712	342	0.1	-29.3
Italy	13,057	10,673	365	16	11,054	5,408	1.1	-15.3
Malta	1,127	134	0	0	134	59	0.0	-88.1
Portugal	1,895	1,446	57	1	1,504	783	0.1	-20.6
Serbia	596	475	17	0	492	226	0.0	-17.4
Slovenia	511	459	21	1	481	226	0.0	-5.9
Spain	7,090	5,914	201	7	6,122	3,050	0.6	-13.7
East Mediterranean Europe	10,916	9,565	1,439	3	11,007	5,498	1.1	0.8
Israel	6,926	6,325	61	0	6,386	3,336	0.6	-7.8
Turkiye	3,990	3,240	1,378	3	4,621	2,162	0.5	15.8
Other Europe	2,063	1,264	579	11	1,854	1,053	0.2	-10.1
Americas	103,554	73,170	5,583	12,287	91,040	44,386	9.0	-12.1
North America	94,161	65,549	5,098	12,243	82,890	39,954	8.2	-12.0
Canada	18,413	13,840	1,011	1,697	16,548	8,017	1.6	-10.1
Cuba	110	135	26	0	161	75	0.0	46.4
Mexico	1,855	1,840	70	0	1,910	1,009	0.2	3.0
United States of America	73,783	49,734	3,991	10,546	64,271	30,853	6.3	-12.9
Central America	435	304	36	0	340	212	0.0	-21.8
Costa Rica	368	244	1	0	245	154	0.0	-33.4
El Salvador	27	29	24	0	53	29	0.0	96.3
Honduras	21	17	9	0	26	13	0.0	23.8
Jamaica	19	14	2	0	16	16	0.0	-15.8
South America	8,610	6,962	353	1	7,316	4,003	0.7	-15.0
Argentina	2,234	1,865	23	0	1,888	1,014	0.2	-15.5
Brazil	3,326	2,455	199	0	2,654	1,411	0.3	-20.2
Chile	1,296	1,111	24	0	1,135	613	0.1	-12.4
Colombia	754	712	60	1	773	426	0.1	2.5
Ecuador	110	106	4	0	110	61	0.0	0.0
Peru	348	278	21	0	299	187	0.0	-14.1
Uruguay	461	370	9	0	379	249	0.0	-17.8
Venezuela	81	65	13	0	78	42	0.0	-3.7
Other America	348	355	96	43	494	217	0.0	42.0
Africa	3,983	2,082	769	3	2,854	1,373	0.3	-28.3
North Africa	541	451	64	0	515	210	0.1	-4.8
Algeria	68	89	5	0	94	32	0.0	38.2
Morocco	269	221	35	0	256	86	0.0	-4.8
Sudan	47	24	4	0	28	9	0.0	-40.4
Tunisia	157	117	20	0	137	83	0.0	-12.7
Subsaharan Africa	2,735	1,310	576	2	1,888	957	0.2	-31.0
Cameroon	194	30	28	0	58	25	0.0	-70.1
Congo	10	13	3	0	16	5	0.0	60.0
Ghana	204	41	17	0	58	15	0.0	-71.6
Kenya	139	118	23	0	141	85	0.0	1.4
Liberia	41	6	5	0	11	2	0.0	-73.2
Nigeria	170	36	101	0	137	29	0.0	-19.4
South Africa	1,631	987	347	2	1,336	725	0.1	-18.1
Tanzania	32	17	7	0	24	5	0.0	-25.0
Uganda	248	34	15	0	49	21	0.0	-80.2
Zimbabwe	66	28	30	0	58	45	0.0	-12.1
Other Africa	707	321	129	1	451	206	0.0	-36.2
Middle East	795	537	179	1	717	135	0.1	-9.8
Bahrain	28	4	0	0	4	3	0.0	-85.7
Egypt	204	129	102	1	232	54	0.0	13.7
Iraq	42	23	8	0	31	2	0.0	-26.2
Jordan	83	62	22	0	84	13	0.0	1.2
Kuwait	65	20	3	0	23	9	0.0	-64.6
Oman	40	14	0	0	14	1	0.0	-65.0
Palestine	18	9	2	0	11	2	0.0	-38.9
Qatar	4	9	1	0	10	1	0.0	150.0
Saudi Arabia	103	74	15	0	89	17	0.0	-13.6
Syria	38	34	7	0	41	8	0.0	7.9
United Arab Emirates	44	48	6	0	54	9	0.0	22.7
Yemen	31	22	2	0	24	1	0.0	-22.6
Other Middle East	95	89	11	0	100	15	0.0	5.3

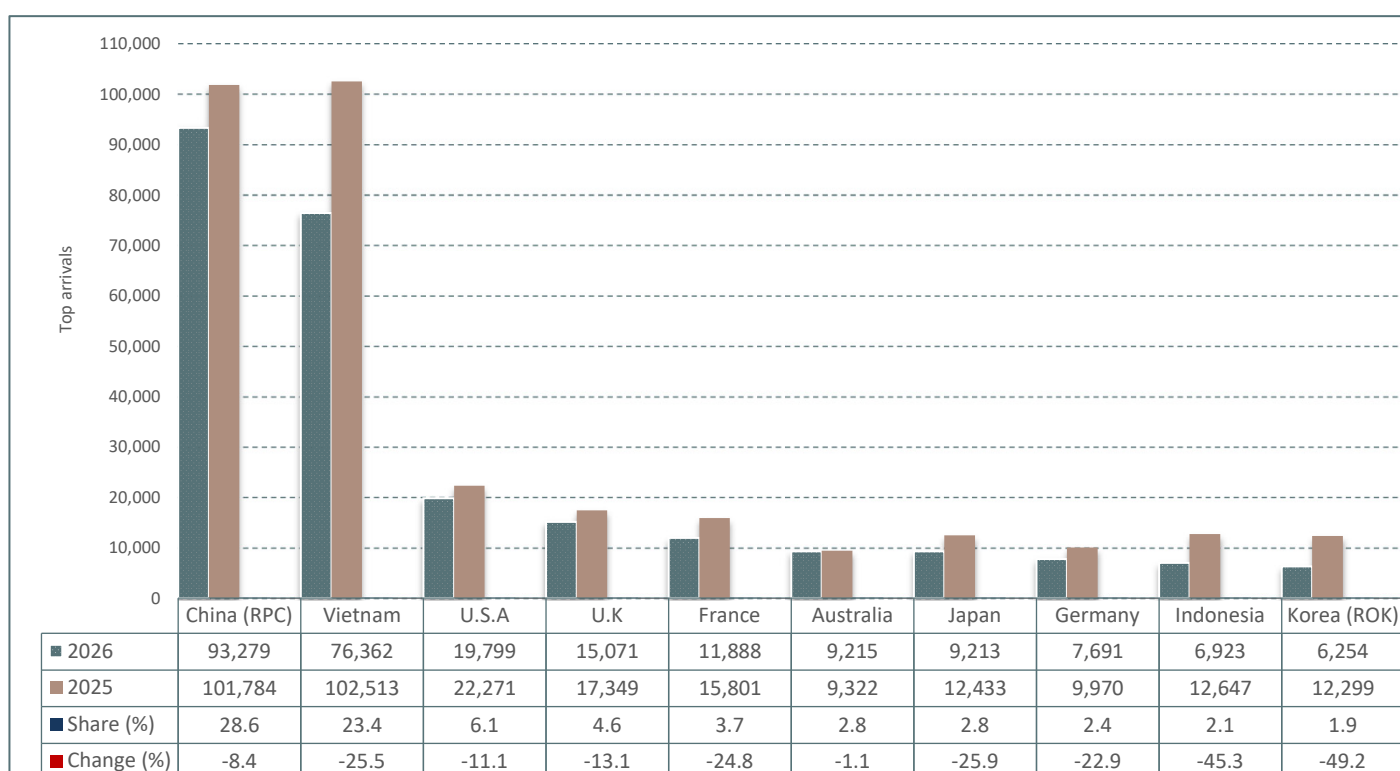
CAMBODIA: TOURISM STATISTICS REPORT IN MARCH 2026

I. INBOUND TOURISM

1. International tourist arrivals in March 2026

	Inbound tourism				Share (%) 2026*	Change (%)		
	2019	2024	2025	2026		25/24	26*/19	2026*/25
Air	456,443	221,871	254,373	209,417	64.3	14.6	-54.1	-17.7
Techo Int'l Airport (KTI)	214,575	156,015	182,521	136,415	41.9	17.0	-36.4	-25.3
Siem Reap Angkor Int'l Airport (SAI)	183,437	64,845	67,703	60,579	18.6	4.4	-67.0	-10.5
Sihanouk Int'l Airport (KOS)	58,431	1,011	4,149	12,423	3.8	310.4	-78.7	199.4
Land and Waterways	176,721	372,232	319,850	116,231	35.7	-14.1	-34.2	-63.7
Land	156,319	362,488	310,357	106,642	32.7	-14.4	-31.8	-65.6
Waterways	20,402	9,744	9,493	9,589	2.9	-2.6	-53.0	1.0
Total	633,164	594,103	574,223	325,648	100.0	-3.3	-48.6	-43.3

2. Top ten markets arrivals in March 2026



II. OUTBOUND TOURISM

Outbound tourism in March 2026

	Outbound tourism				Change (%)		
	2019	2024	2025	2026	25/24	26*/19	2026*/25
Cambodia Outbound Tourists	156,127	153,329	129,739	83,852	-15.4	-46.3	-35.4
International Tourists Departure	559,747	550,245	556,646	345,742	1.2	-38.2	-37.9

III. INTERNAL TOURISM

Domestic and foreign visitors' arrivals to the regions in March 2026

	March 2025		March 2026		Change (%) 2026*/25	
	KH	FO	KH	FO	KH	FO
Phnom Penh	114,318	188,908	775,554	172,017	578.4	-8.9
Siem Reap Angkor	126,500	118,927	133,888	82,026	5.8	-31.0
Coastal Zone	493,204	50,148	812,388	67,984	64.7	35.6
Preah Sihanouk	225,032	27,799	454,382	49,419	101.9	77.8
Eco-tourism Zone	34,688	5,621	39,496	4,145	13.9	-26.3
Others	121,468	15,000	118,189	17,158	-2.7	14.4
Total	890,178	378,604	1,879,515	343,330	111.1	-9.3

Note:

KH: Cambodia visitors

FO: Foreign visitors

International Tourist Arrivals to Cambodia by Country of Residence in March 2026
(by all means of transportation)

Regions Country of Residence	2025		2026				Share 2026*	Change 2026*/25
	Purposes of Visit			Total				
	Holiday	Business	Others	Total	Female	(%)	(%)	
Grand Total	574,223	228,312	88,224	9,112	325,648	121,768	100.0	-43.3
Asia and the Pacific	458,195	147,817	82,334	3,787	233,938	77,519	71.8	-48.9
ASEAN (Southeast Asia)	300,809	82,187	19,389	281	101,857	40,744	31.3	-66.1
Brunei Darussalam	31	27	3	0	30	17	0.0	-3.2
Indonesia	12,647	2,407	4,504	12	6,923	2,196	2.1	-45.3
Lao PDR	15,609	1,395	379	0	1,774	922	0.5	-88.6
Malaysia	7,550	3,578	2,026	91	5,695	1,395	1.7	-24.6
Myanmar	3,258	1,114	719	0	1,833	946	0.6	-43.7
Philippines	5,450	2,844	1,007	3	3,854	2,304	1.2	-29.3
Singapore	4,003	2,767	407	27	3,201	1,014	1.0	-20.0
Thailand	149,732	1,309	741	105	2,155	938	0.7	-98.6
Timor Leste	16	8	22	0	30	9	0.0	87.5
Vietnam	102,513	66,738	9,581	43	76,362	31,003	23.4	-25.5
Northeast Asia	134,973	52,900	60,462	1,260	114,622	29,926	35.2	-15.1
China	101,784	38,492	54,368	419	93,279	22,663	28.6	-8.4
Hong Kong (China)	9	1	0	0	1	1	0.0	-88.9
Japan	12,433	7,045	2,081	87	9,213	3,422	2.8	-25.9
Korea (ROK)	12,299	4,200	1,586	468	6,254	1,807	1.9	-49.2
Macao (China)	0	0	0	0	0	0	0.0	
Mongolia	92	67	16	0	83	30	0.0	-9.8
Taiwan (China)	8,356	3,095	2,411	286	5,792	2,003	1.8	-30.7
Southern Asia	11,626	5,160	1,709	1	6,870	1,884	2.1	-40.9
Afghanistan	37	15	2	0	17	3	0.0	-54.1
Bangladesh	1,639	126	273	0	399	53	0.1	-75.7
Bhutan	16	5	13	0	18	5	0.0	12.5
India	6,526	4,618	1,099	1	5,718	1,666	1.8	-12.4
Iran	283	68	5	0	73	13	0.0	-74.2
Maldives	24	17	3	0	20	5	0.0	-16.7
Nepal	789	86	171	0	257	68	0.1	-67.4
Pakistan	1,919	84	76	0	160	24	0.0	-91.7
Sri Lanka	393	141	67	0	208	47	0.1	-47.1
Oceania	10,710	7,537	740	2,245	10,522	4,956	3.2	-1.8
Australia	9,322	6,690	672	1,853	9,215	4,329	2.8	-1.1
Fiji	24	9	2	0	11	4	0.0	-54.2
New Zealand	1,364	838	66	392	1,296	623	0.4	-5.0
Other Asia & the Pacific	77	33	34	0	67	9	0.0	-13.0
Europe	83,149	57,231	3,911	1,424	62,566	30,097	19.2	-24.8
Northern Europe	22,124	17,329	885	90	18,304	8,647	5.6	-17.3
Denmark	1,312	837	36	5	878	460	0.3	-33.1
Finland	406	218	14	2	234	104	0.1	-42.4
Iceland	60	45	2	0	47	25	0.0	-21.7
Ireland	1,176	913	56	2	971	469	0.3	-17.4
Norway	817	494	33	6	533	250	0.2	-34.8
Sweden	1,004	509	47	14	570	224	0.2	-43.2
United Kingdom	17,349	14,313	697	61	15,071	7,115	4.6	-13.1
Western Europe	32,717	21,647	1,606	1,319	24,572	11,594	7.5	-24.9
Austria	1,064	721	32	1	754	363	0.2	-29.1
Belgium	1,483	1,072	77	21	1,170	536	0.4	-21.1
France	15,801	9,795	929	1,164	11,888	5,664	3.7	-24.8
Germany	9,970	7,343	301	47	7,691	3,688	2.4	-22.9
Luxembourg	104	63	4	1	68	31	0.0	-34.6
Monaco	12	8	0	0	8	5	0.0	-33.3
Netherlands	2,621	1,591	130	32	1,753	750	0.5	-33.1
Switzerland	1,662	1,054	133	53	1,240	557	0.4	-25.4
Central / Eastern Europe	16,359	9,979	576	10	10,565	5,351	3.2	-35.4
Azerbaijan	62	38	12	0	50	19	0.0	-19.4
Bulgaria	608	586	9	0	595	376	0.2	-2.1
Czech Republic	909	544	27	2	573	289	0.2	-37.0
Estonia	212	181	0	0	181	96	0.1	-14.6
Hungary	821	616	13	1	630	316	0.2	-23.3
Kazakhstan	448	352	33	2	387	194	0.1	-13.6
Kyrgyzstan	87	134	16	0	150	61	0.0	72.4
Latvia	143	100	8	0	108	56	0.0	-24.5
Lithuania	362	223	7	0	230	118	0.1	-36.5
Poland	2,786	2,336	116	2	2,454	1,226	0.8	-11.9
Romania	484	444	9	0	453	265	0.1	-6.4
Russian Federation	8,144	3,526	239	1	3,766	1,884	1.2	-53.8
Slovakia	491	264	10	0	274	132	0.1	-44.2
Tajikistan	33	30	3	0	33	13	0.0	0.0
Turkmenistan	42	56	6	0	62	25	0.0	47.6
Ukraine	522	456	50	2	508	252	0.2	-2.7
Uzbekistan	205	93	18	0	111	29	0.0	-45.9

Source: Tourism Statistics Department, MOT.

International Tourist Arrivals to Cambodia by Country of Residence in March 2026
(by all means of transportation)

Regions Country of Residence	2025		2026				Share 2026*	Change 2026*/25
	Purposes of Visit			Total		Female		
	Holiday	Business	Others				(%)	(%)
Grand Total	574,223	228,312	88,224	9,112	325,648	121,768	100.0	-43.3
Southern Europe	7,965	5,533	198	2	5,733	2,772	1.8	-28.0
Croatia	181	90	3	0	93	49	0.0	-48.6
Cyprus	16	25	1	0	26	13	0.0	62.5
Greece	363	152	6	0	158	61	0.0	-56.5
Italy	3,896	2,480	105	2	2,587	1,249	0.8	-33.6
Malta	66	67	0	0	67	31	0.0	1.5
Portugal	661	438	17	0	455	218	0.1	-31.2
Serbia	161	101	3	0	104	42	0.0	-35.4
Slovenia	127	116	4	0	120	58	0.0	-5.5
Spain	2,494	2,064	59	0	2,123	1,051	0.7	-14.9
East Mediterranean Europe	3,386	2,419	444	3	2,866	1,430	0.9	-15.4
Israel	2,296	1,445	12	0	1,457	754	0.4	-36.5
Turkiye	1,090	974	432	3	1,409	676	0.4	29.3
Other Europe	598	324	202	0	526	303	0.2	-12.0
Americas	31,549	22,526	1,710	3,900	28,136	13,734	8.6	-10.8
North America	28,613	20,266	1,586	3,888	25,740	12,397	7.9	-10.0
Canada	5,598	4,370	323	530	5,223	2,567	1.6	-6.7
Cuba	36	49	6	0	55	24	0.0	52.8
Mexico	708	641	22	0	663	345	0.2	-6.4
United States of America	22,271	15,206	1,235	3,358	19,799	9,461	6.1	-11.1
Central America	145	106	11	0	117	72	0.0	-19.3
Costa Rica	117	86	0	0	86	56	0.0	-26.5
El Salvador	14	9	7	0	16	6	0.0	14.3
Honduras	4	6	4	0	10	5	0.0	150.0
Jamaica	10	5	0	0	5	5	0.0	-50.0
South America	2,667	2,055	87	1	2,143	1,209	0.7	-19.6
Argentina	552	431	8	0	439	242	0.1	-20.5
Brazil	1,075	721	40	0	761	416	0.2	-29.2
Chile	284	236	11	0	247	130	0.1	-13.0
Colombia	226	235	14	1	250	142	0.1	10.6
Ecuador	53	36	3	0	39	20	0.0	-26.4
Peru	110	91	6	0	97	48	0.0	-11.8
Uruguay	332	280	0	0	280	195	0.1	-15.7
Venezuela	35	25	5	0	30	16	0.0	-14.3
Other America	124	99	26	11	136	56	0.0	9.7
Africa	1,148	629	208	0	837	390	0.3	-27.1
North Africa	111	108	18	0	126	45	0.0	13.5
Algeria	9	22	1	0	23	11	0.0	155.6
Morocco	69	58	10	0	68	20	0.0	-1.4
Sudan	3	8	2	0	10	2	0.0	233.3
Tunisia	30	20	5	0	25	12	0.0	-16.7
Subsaharan Africa	854	388	152	0	540	266	0.2	-36.8
Cameroon	73	4	8	0	12	7	0.0	-83.6
Congo	2	10	3	0	13	5	0.0	550.0
Ghana	94	14	3	0	17	6	0.0	-81.9
Kenya	36	41	6	0	47	31	0.0	30.6
Liberia	16	2	2	0	4	2	0.0	-75.0
Nigeria	58	17	32	0	49	12	0.0	-15.5
South Africa	449	279	81	0	360	179	0.1	-19.8
Tanzania	9	1	4	0	5	3	0.0	-44.4
Uganda	99	6	3	0	9	5	0.0	-90.9
Zimbabwe	18	14	10	0	24	16	0.0	33.3
Other Africa	183	133	38	0	171	79	0.1	-6.6
Middle East	182	109	61	1	171	28	0.1	-6.0
Bahrain	7	0	0	0	0	0	0.0	-100.0
Egypt	34	28	36	1	65	10	0.0	91.2
Iraq	13	6	4	0	10	0	0.0	-23.1
Jordan	17	21	10	0	31	5	0.0	82.4
Kuwait	11	1	0	0	1	1	0.0	-90.9
Oman	11	4	0	0	4	1	0.0	-63.6
Palestine	4	1	0	0	1	1	0.0	-75.0
Qatar	0	0	1	0	1	0	0.0	0.0
Saudi Arabia	23	11	3	0	14	2	0.0	-39.1
Syria	14	7	0	0	7	0	0.0	-50.0
United Arab Emirates	7	13	3	0	16	2	0.0	128.6
Yemen	3	2	0	0	2	0	0.0	-33.3
Other Middle East	38	15	4	0	19	6	0.0	-50.0